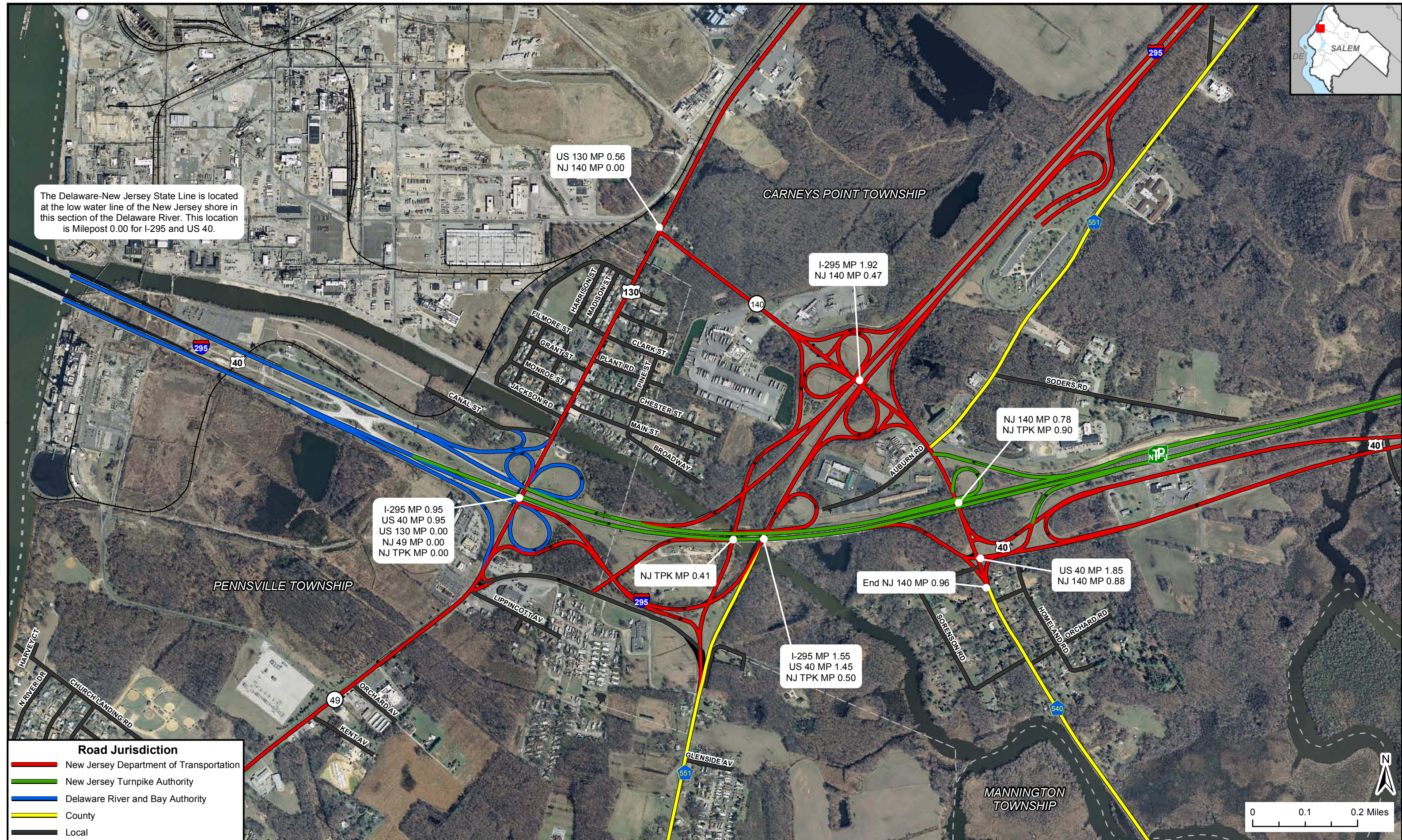


ENLARGED VIEW 26 (Carneys Point Township, Pennsville Township and Mannington Township, Salem County)



The Delaware-New Jersey State Line is located at the low water line of the New Jersey shore in this section of the Delaware River. This location is Milepost 0.00 for I-295 and US 40.



I-295 MP 0.95  
 US 40 MP 0.95  
 US 130 MP 0.00  
 NJ 49 MP 0.00  
 NJ TPK MP 0.00

US 130 MP 0.56  
 NJ 140 MP 0.00

I-295 MP 1.92  
 NJ 140 MP 0.47

NJ 140 MP 0.78  
 NJ TPK MP 0.90

NJ TPK MP 0.41

End NJ 140 MP 0.96

US 40 MP 1.85  
 NJ 140 MP 0.88

I-295 MP 1.55  
 US 40 MP 1.45  
 NJ TPK MP 0.50

**Road Jurisdiction**

- New Jersey Department of Transportation
- New Jersey Turnpike Authority
- Delaware River and Bay Authority
- County
- Local

